

TOWNSHIP OF SADDLEBROOK
STORMWATER POLLUTION PREVENTION PLAN (SPPP) ATTACHMENT 7
TIER A MUNICIPAL STORMWATER
GENERAL PERMIT No. NJ0121521, PID No. 12897

OUTFALL INSPECTION LOGS

**OUTFALL INSPECTIONS AND MAINTENANCE ARE THE RESPONSIBILITY OF BERGEN COUNTY
 IN CASES WHERE STEPS NEED TO BE TAKEN TO CORRECT A PROBLEM, NOTIFY CHRISTOS KAVVA
 COUNTY OF BERGEN DPW,
 ONE BERGEN COUNTY PLAZA -ROOM 416,
 HACKENSACK, NEW JERSEY,
 PHONE 201 336-6774, CELL 201 364-2414**

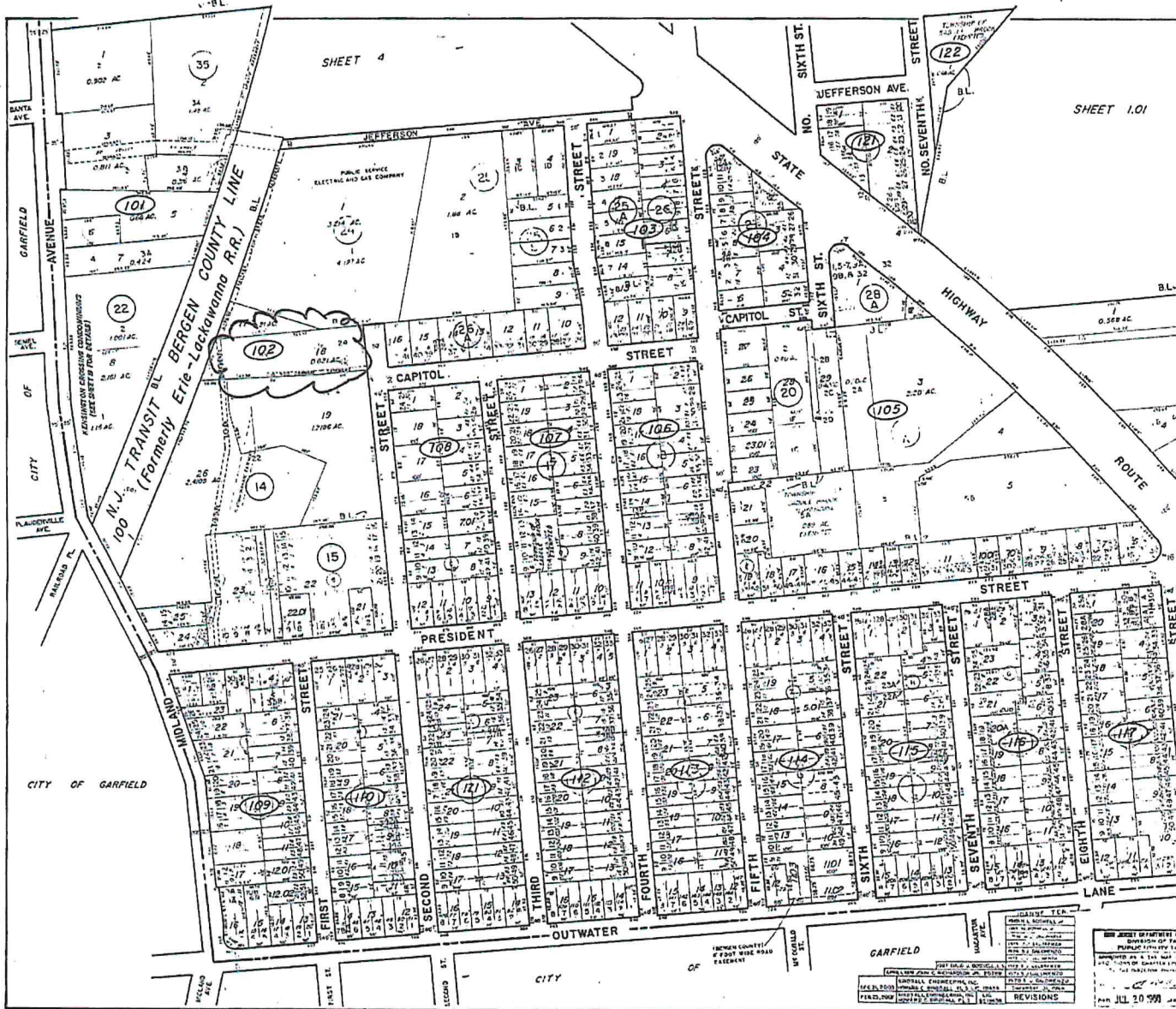
OUTFALL	ZONE/LOCATION	SPPP PLAN/BEST MANAGEMENT PRACTICE (BMP)FOCUS/ BMP PROPERLY IMPLEMENTED?
1	1/SADDLE RIVER COUNTY PARK/NORTHEAST TOWNSHIP	scouring, obstructions, damage, floatables, oil sheens, illicit discharges
2	1/ SADDLE RIVER COUNTY PARK /NORTHEAST TOWNSHIP	scouring, obstructions, damage, floatables, oil sheens, illicit discharges
3	3/ SADDLE RIVER COUNTY PARK /EAST CENTRAL TOWNSHIP	scouring, obstructions, damage, floatables, oil sheens, illicit discharges
4	4/ SADDLE RIVER COUNTY PARK /EAST CENTRAL TOWNSHIP	scouring, obstructions, damage, floatables, oil sheens, illicit discharges
5	5/ SADDLE RIVER COUNTY PARK /EAST CENTRAL TOWNSHIP	scouring, obstructions, damage, floatables, oil sheens, illicit discharges
6	6/ SADDLE RIVER COUNTY PARK /EAST CENTRAL TOWNSHIP	scouring, obstructions, damage, floatables, oil sheens, illicit discharges
7	6/ SADDLE RIVER COUNTY PARK /EAST CENTRAL TOWNSHIP	scouring, obstructions, damage, floatables, oil sheens, illicit discharges
8	7/ SADDLE RIVER COUNTY PARK /SOUTHEAST TOWNSHIP	scouring, obstructions, damage, floatables, oil sheens, illicit discharges
9	8/NEAR JEFFERSON STREET/SOUTHWEST TOWNSHIP	scouring, obstructions, damage, floatables, oil sheens, illicit discharges

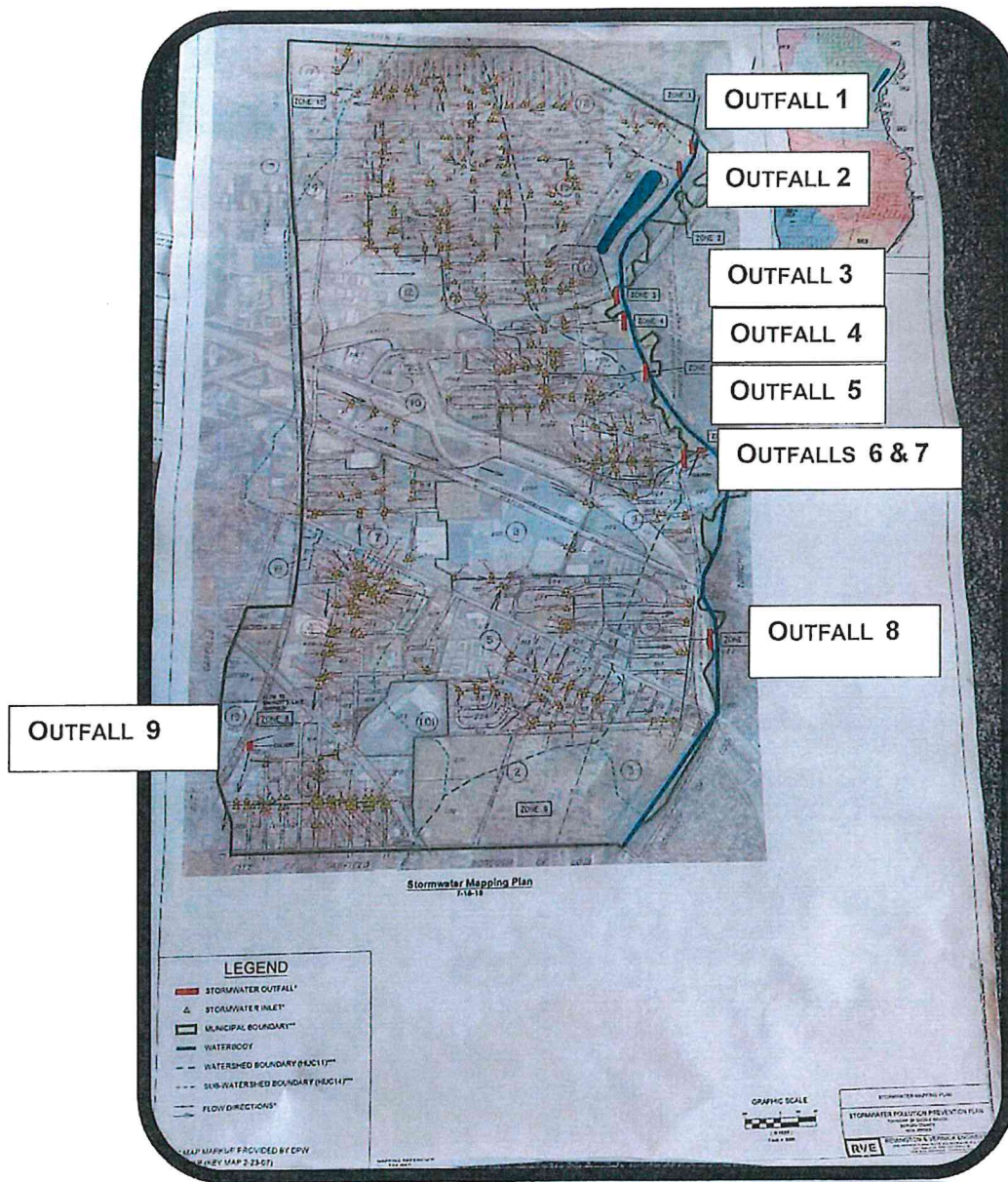
INSPECTION DATE/DATE REPORTED TO BERGEN COUNTY

INSPECTOR (ROBERT HICSWA)
 DEPARTMENT OF PUBLIC WORKS SUPERVISOR/STORMWATER COORDINATOR (INITIALS)

20f2

SITE LOCATION





SPPP PLAN ATTACHMENT 7

OUTFALL INSPECTION LOGS

STORMWATER MAPPING PLAN

LOCATION OF OUTFALLS (MARKED IN RED)